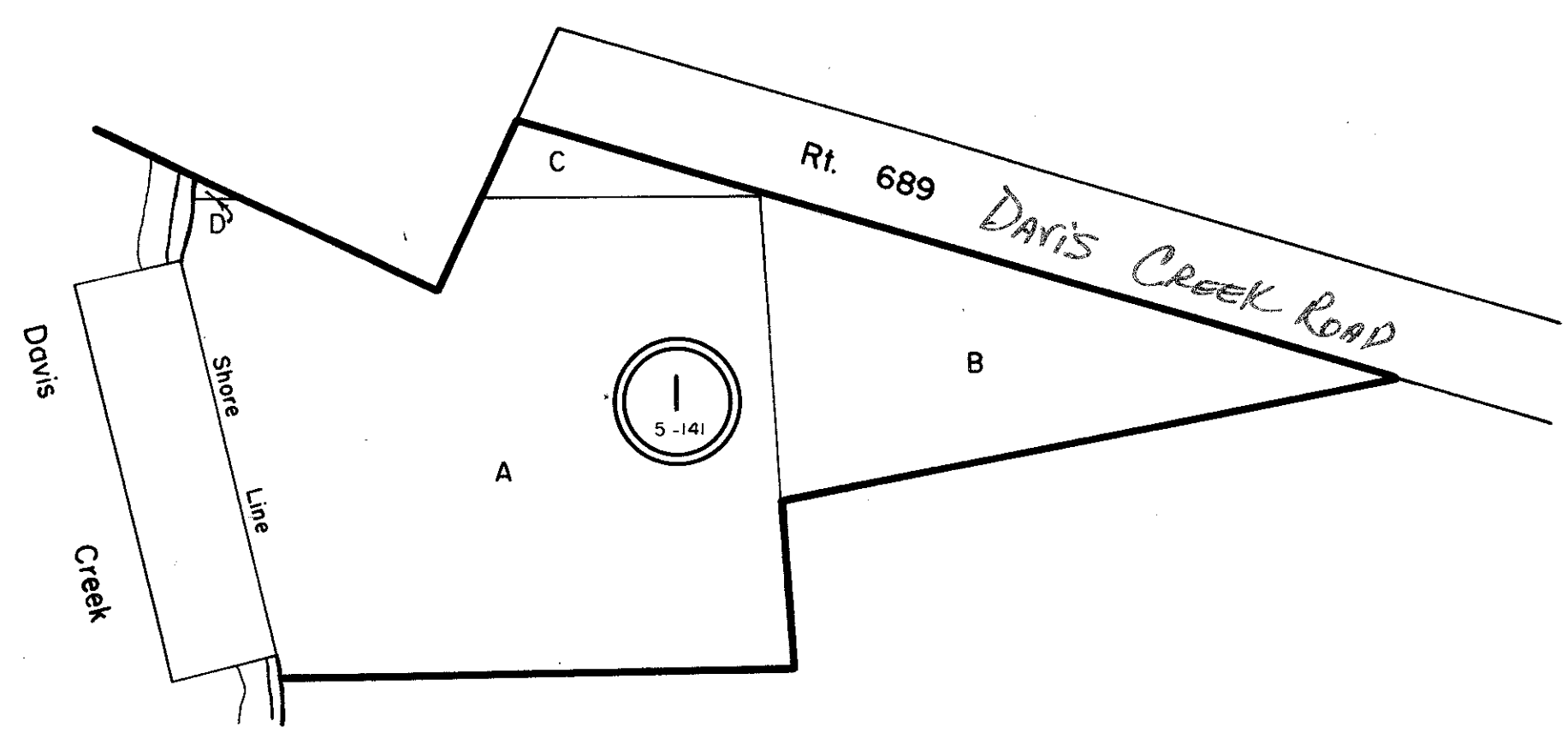
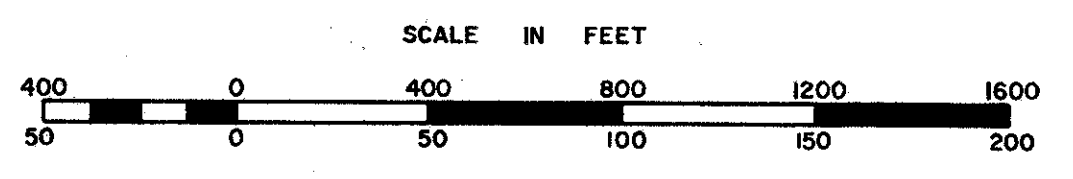


MATHEWS COUNTY



① "THE OWENS PLAT," HENRY B., THOMAS E., AND TAYLOR HENRY-PB. 5, Pg. 141



CHESAPEAKE DISTRICT

SECTION
INSERT 43A

REVISED: _____

PREPARED BY VIRGINIA STATE DEPARTMENT OF TAXATION, DIVISION OF REAL ESTATE APPRAISAL AND MAPPING