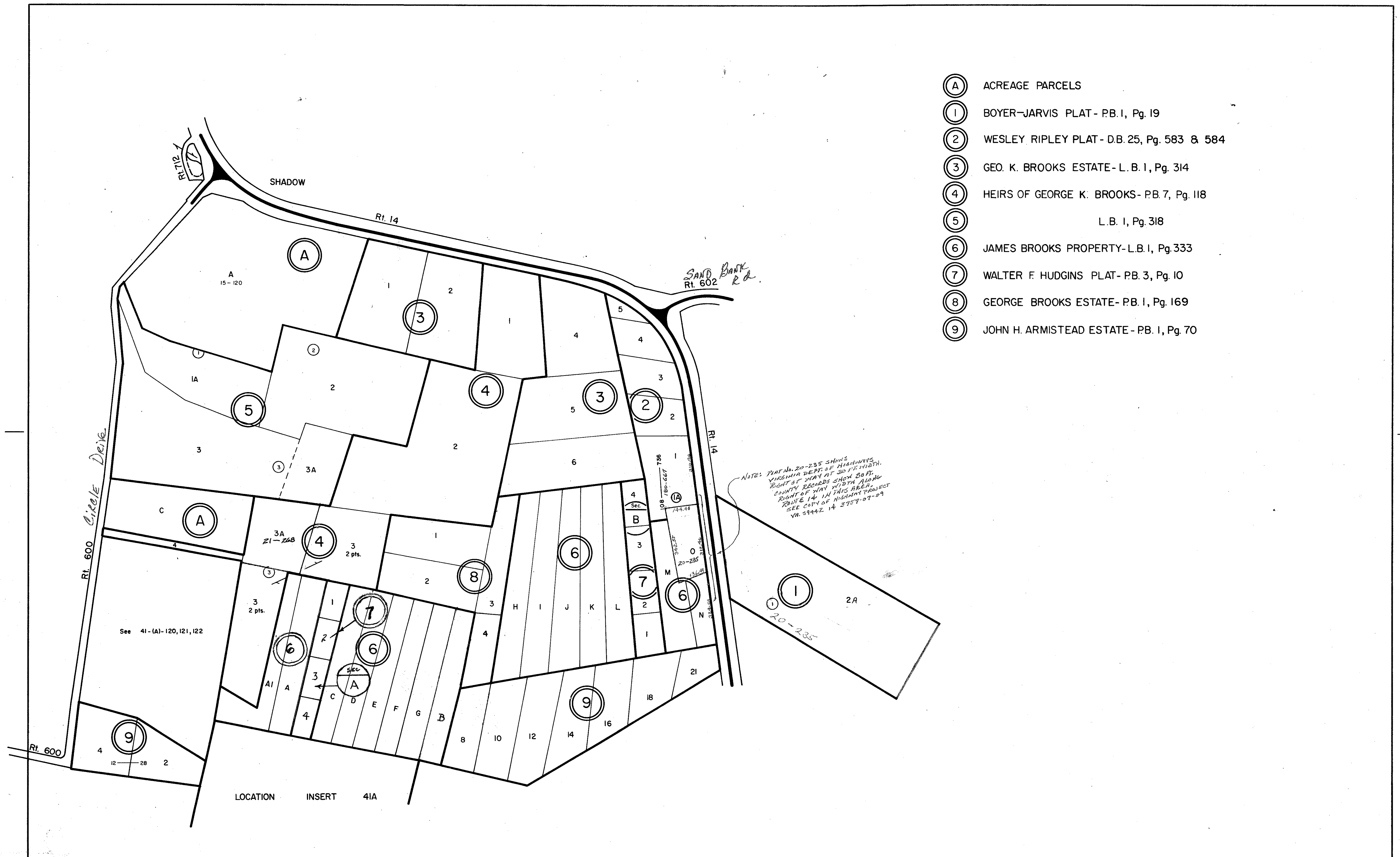
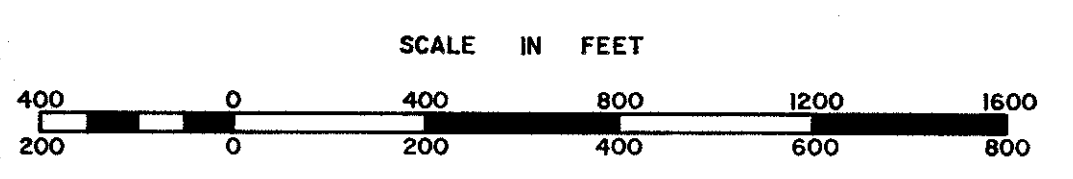


MATHEWS COUNTY



- (A) ACREAGE PARCELS
- (1) BOYER-JARVIS PLAT - P.B. I, Pg. 19
- (2) WESLEY RIPLEY PLAT - D.B. 25, Pg. 583 & 584
- (3) GEO. K. BROOKS ESTATE - L. B. I, Pg. 314
- (4) HEIRS OF GEORGE K. BROOKS - P.B. 7, Pg. 118
- (5) L. B. I, Pg. 318
- (6) JAMES BROOKS PROPERTY - L. B. I, Pg. 333
- (7) WALTER F. HUDGINS PLAT - P.B. 3, Pg. 10
- (8) GEORGE BROOKS ESTATE - P.B. I, Pg. 169
- (9) JOHN H. ARMISTEAD ESTATE - P.B. I, Pg. 70



CHESAPEAKE DISTRICT

SECTION
INSERT 42C