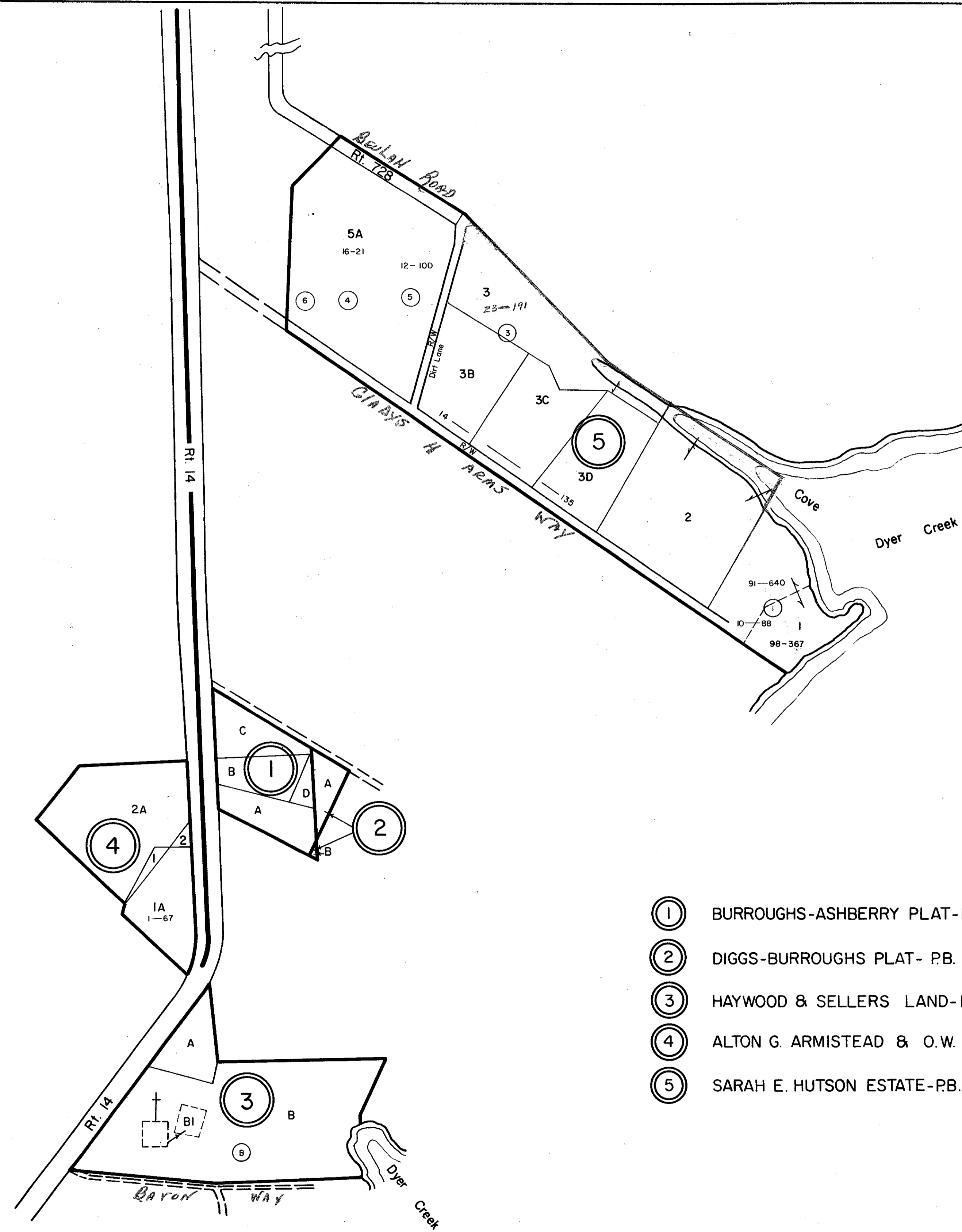
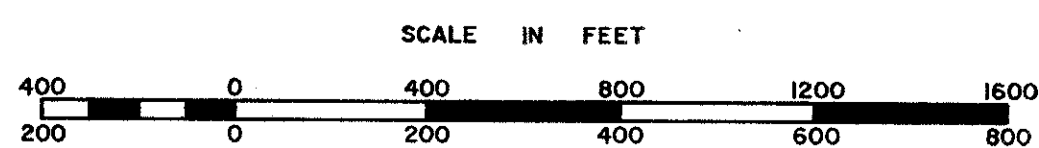


MATHEWS COUNTY



- ① BURROUGHS-ASHBERRY PLAT-P.B. 5, Pg. 70
- ② DIGGS-BURROUGHS PLAT- P.B. 6, Pg. 1
- ③ HAYWOOD & SELLERS LAND-P.B. 7, Pg. 40 - D.B. 124, Pg. 478
- ④ ALTON G. ARMISTEAD & O.W. HACKER PLAT-P.B. 1, Pg. 99
- ⑤ SARAH E. HUTSON ESTATE-P.B. 1, Pg. 32



REVISED: 7-6-82 Wingate Appraisal & Mapping Service, Roanoke, Va. 1/1/87, 1/1/90

CHESAPEAKE DISTRICT

PREPARED BY VIRGINIA STATE DEPARTMENT OF TAXATION, DIVISION OF REAL ESTATE APPRAISAL AND MAPPING

SECTION
INSERT 42B