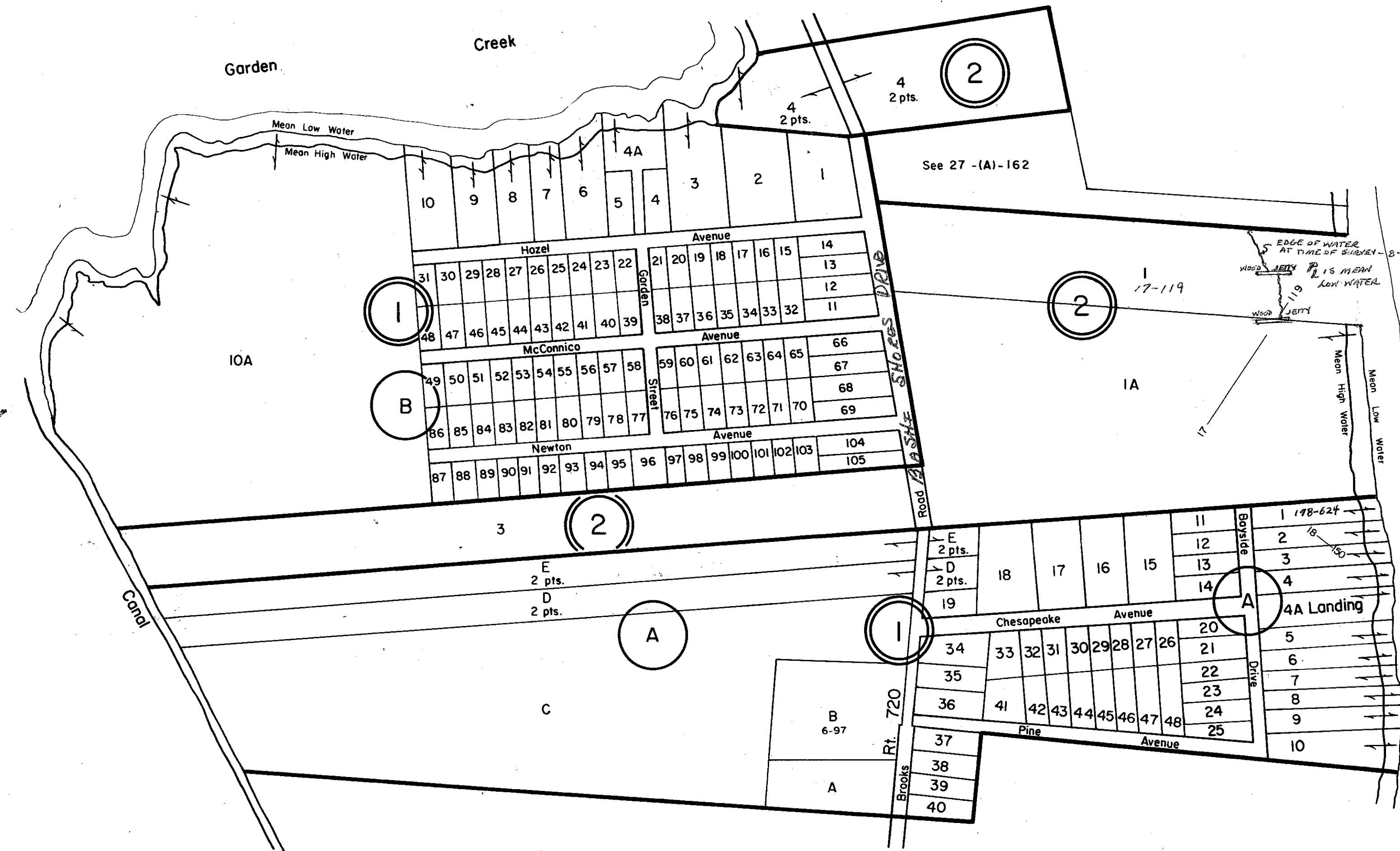
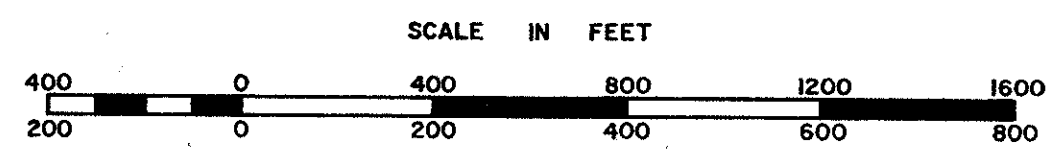


MATHEWS COUNTY



- ① BASHI SHORES SUBD. - PB. 4, Pg. 92A
- ② CADMUS STEPHENSON AND C. MAC OWENS LAND - PB.3, Pg. 185 & 186



PREPARED BY VIRGINIA STATE DEPARTMENT OF TAXATION, DIVISION OF REAL ESTATE APPRAISAL AND MAPPING