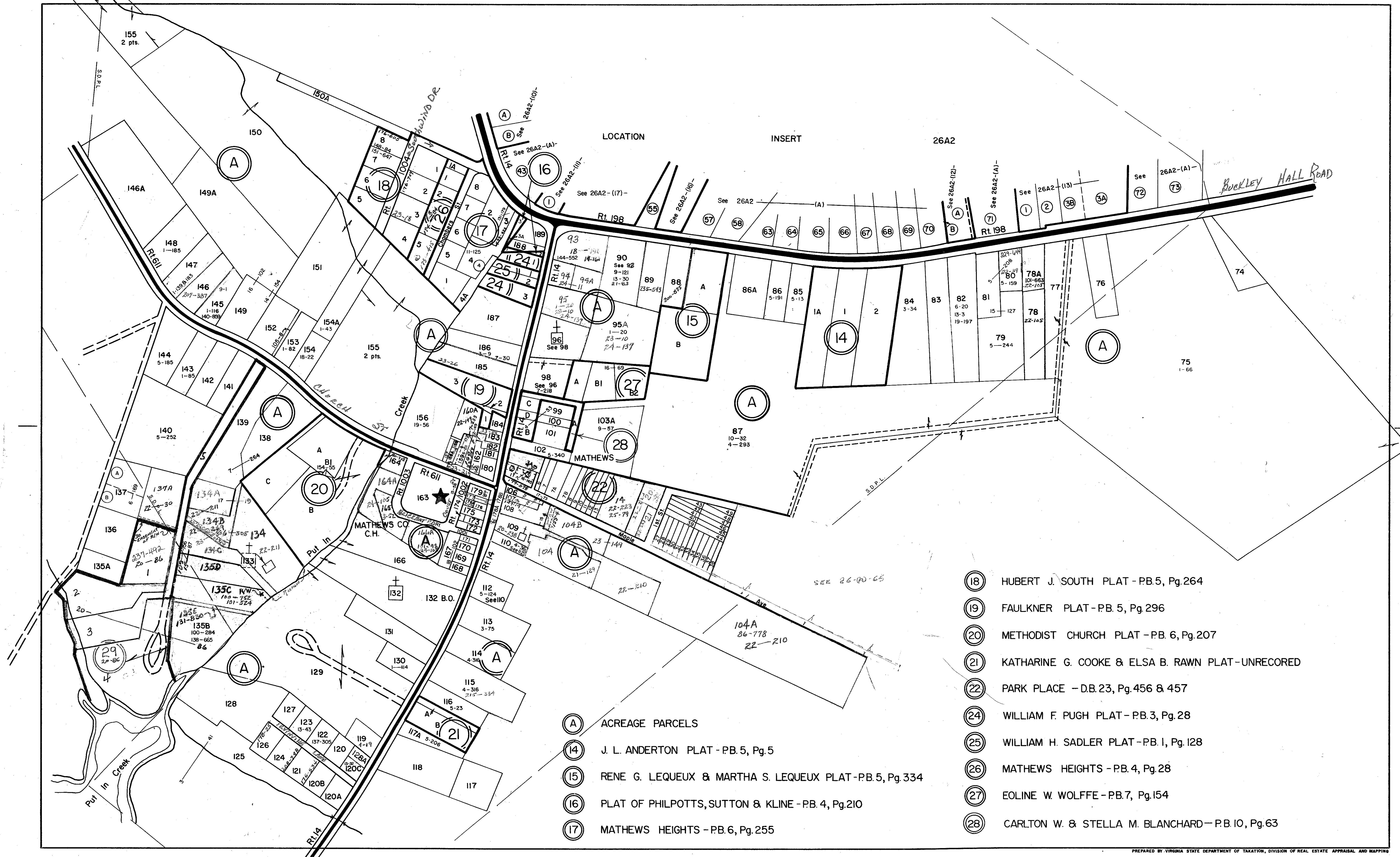
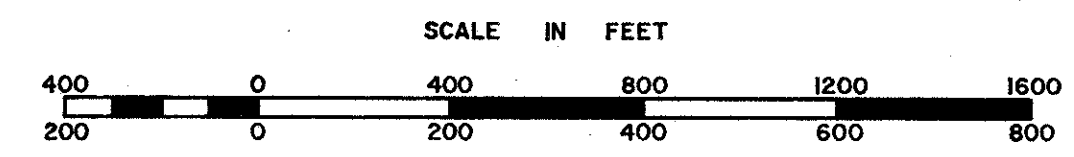


# MATHEWS COUNTY



- (A) ACREAGE PARCELS
- (14) J. L. ANDERTON PLAT - P.B. 5, Pg. 5
- (15) RENE G. LEQUEUX & MARTHA S. LEQUEUX PLAT - P.B. 5, Pg. 334
- (16) PLAT OF PHILPOTTS, SUTTON & KLINE - P.B. 4, Pg. 210
- (17) MATHEWS HEIGHTS - P.B. 6, Pg. 255

- (18) HUBERT J. SOUTH PLAT - P.B. 5, Pg. 264
- (19) FAULKNER PLAT - P.B. 5, Pg. 296
- (20) METHODIST CHURCH PLAT - P.B. 6, Pg. 207
- (21) KATHARINE G. COOKE & ELSA B. RAWN PLAT - UNRECORDED
- (22) PARK PLACE - D.B. 23, Pg. 456 & 457
- (24) WILLIAM F. PUGH PLAT - P.B. 3, Pg. 28
- (25) WILLIAM H. SADLER PLAT - P.B. 1, Pg. 128
- (26) MATHEWS HEIGHTS - P.B. 4, Pg. 28
- (27) EOLINE W. WOLFFE - P.B. 7, Pg. 154
- (28) CARLTON W. & STELLA M. BLANCHARD - P.B. 10, Pg. 63



WESTVILLE DISTRICT

SECTION  
INSERT 26A3