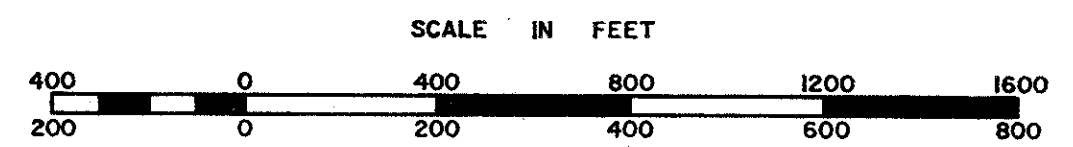
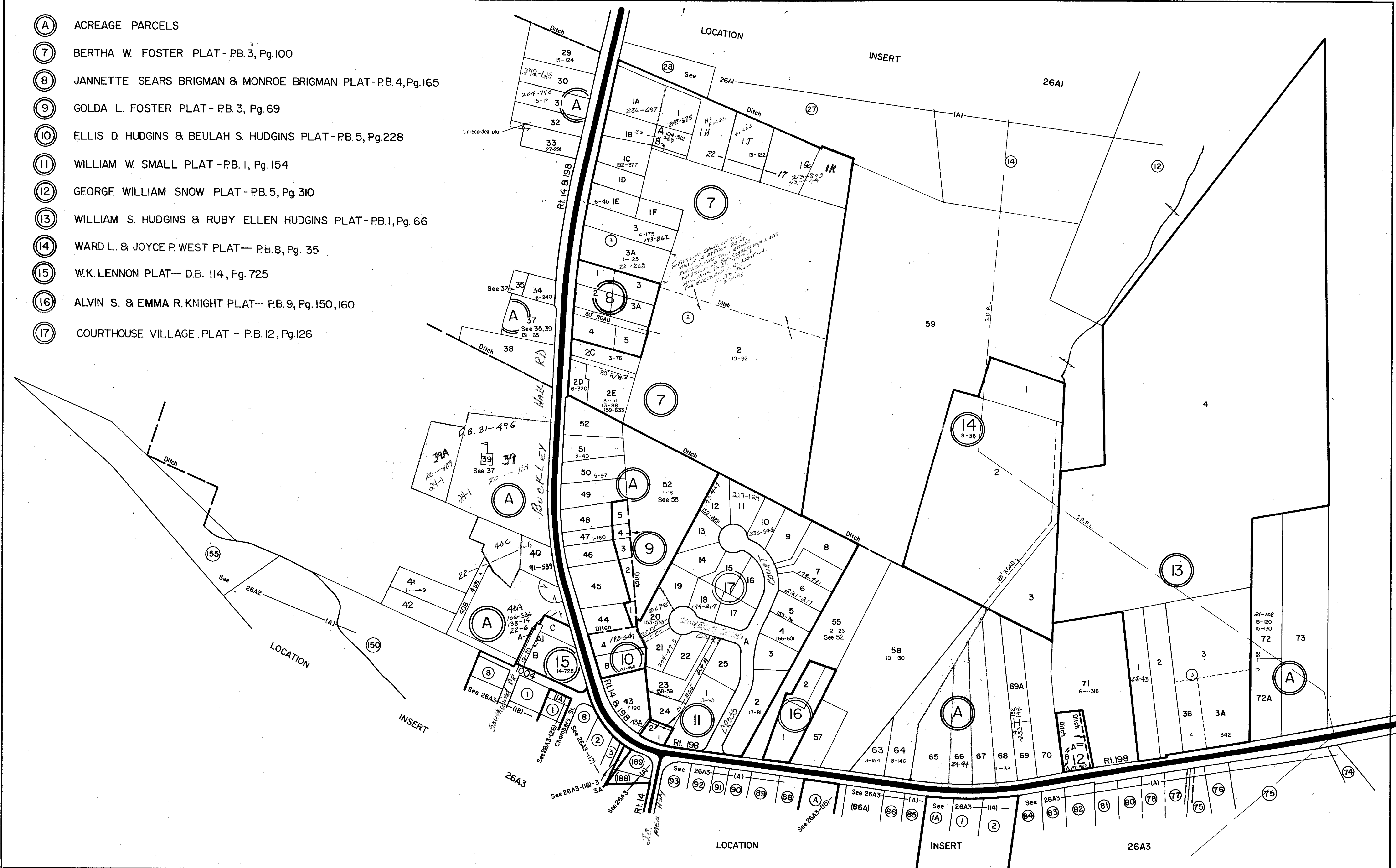


# MATHEWS COUNTY

- (A) ACREAGE PARCELS
- (7) BERTHA W. FOSTER PLAT - PB. 3, Pg. 100
- (8) JANNETTE SEARS BRIGMAN & MONROE BRIGMAN PLAT - PB. 4, Pg. 165
- (9) GOLDA L. FOSTER PLAT - PB. 3, Pg. 69
- (10) ELLIS D. HUDGINS & BEULAH S. HUDGINS PLAT - PB. 5, Pg. 228
- (11) WILLIAM W. SMALL PLAT - PB. 1, Pg. 154
- (12) GEORGE WILLIAM SNOW PLAT - PB. 5, Pg. 310
- (13) WILLIAM S. HUDGINS & RUBY ELLEN HUDGINS PLAT - PB. 1, Pg. 66
- (14) WARD L. & JOYCE P. WEST PLAT - PB. 8, Pg. 35
- (15) W.K. LENNON PLAT - D.B. 114, Pg. 725
- (16) ALVIN S. & EMMA R. KNIGHT PLAT - PB. 9, Pg. 150, 160
- (17) COURTHOUSE VILLAGE PLAT - P.B. 12, Pg. 126



PREPARED BY VIRGINIA STATE DEPARTMENT OF TAXATION, DIVISION OF REAL ESTATE APPRAISAL AND MAPPING

WESTVILLE DISTRICT

SECTION 26A2  
INSERT