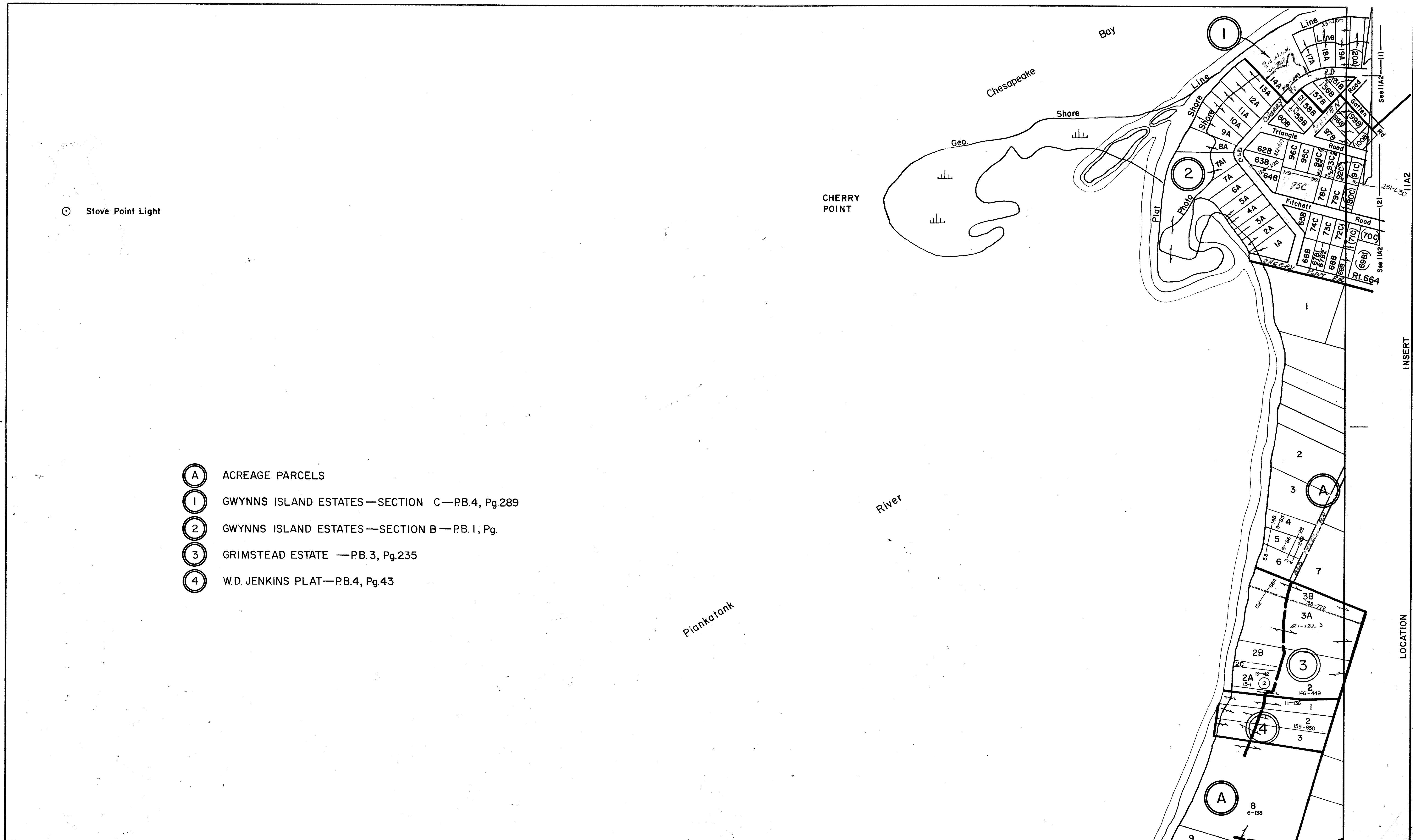
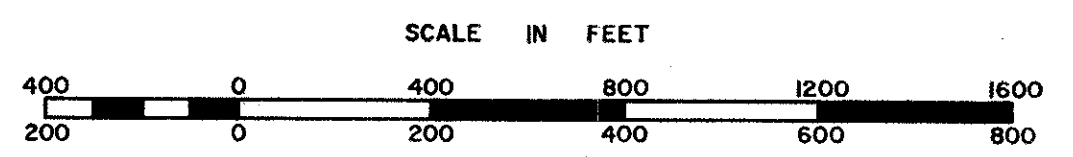


# MATHEWS COUNTY



○ Stove Point Light

- Ⓐ ACREAGE PARCELS
- ① GWYNNS ISLAND ESTATES—SECTION C—PB.4, Pg.289
- ② GWYNNS ISLAND ESTATES—SECTION B—PB. 1, Pg.
- ③ GRIMSTEAD ESTATE —PB. 3, Pg.235
- ④ W.D. JENKINS PLAT—PB.4, Pg.43



REVISED: 5-8-82 by Wingate Appraisal & Mapping Service, Roanoke, Virginia 1/1/87, 1/1/90, 10/92

PIANKATANK DISTRICT  
 GWYNN ISLAND

PREPARED BY VIRGINIA STATE DEPARTMENT OF TAXATION, DIVISION OF REAL ESTATE APPRAISAL AND MAPPING  
 LOCATION INSERT 11A3

SECTION  
 INSERT 11A1

INSERT

LOCATION