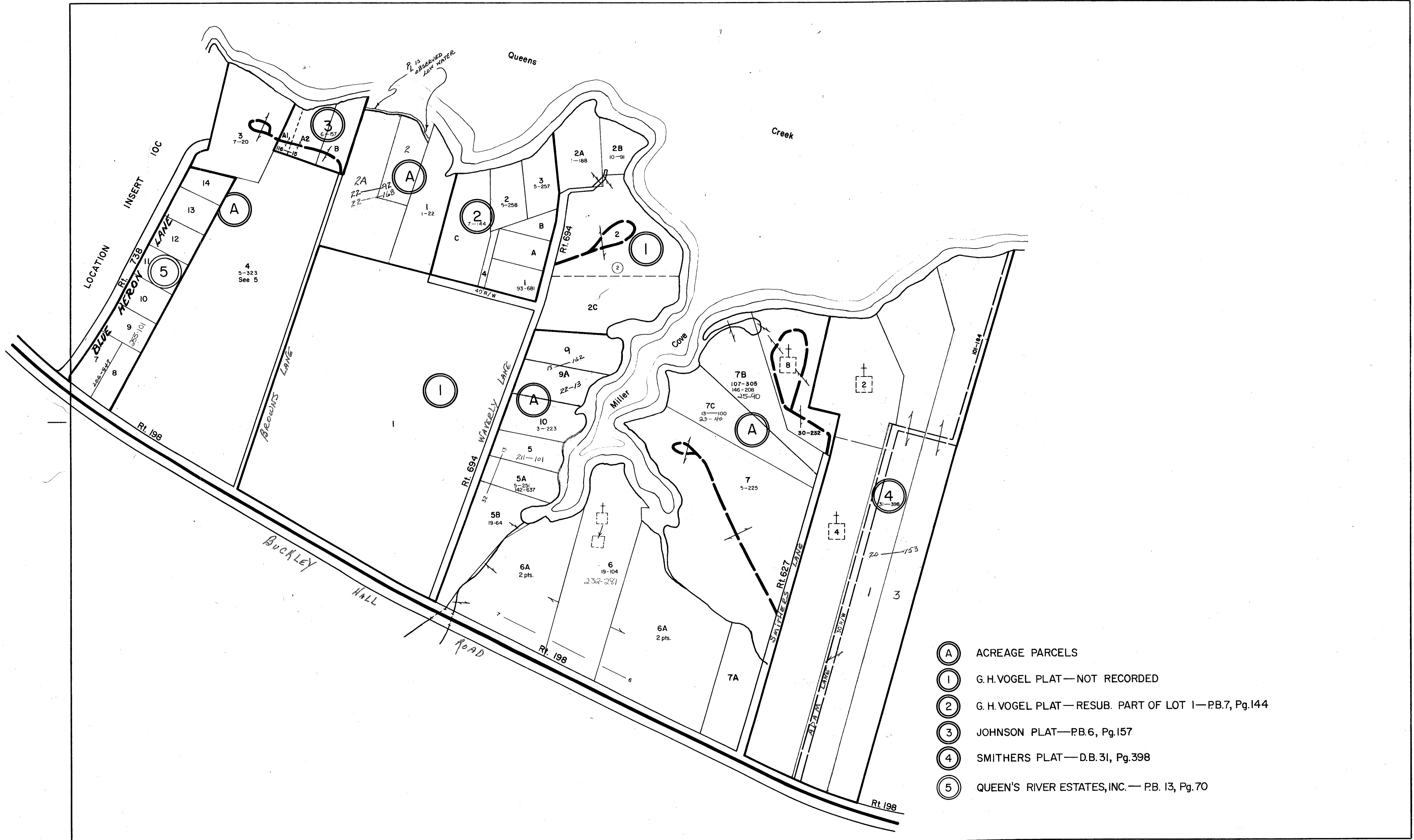
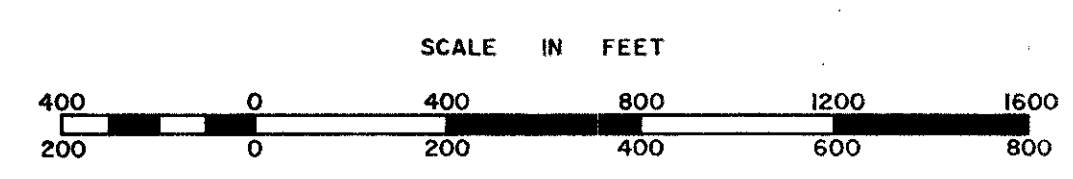


MATHEWS COUNTY



- (A) ACREAGE PARCELS
- (1) G. H. VOGEL PLAT—NOT RECORDED
- (2) G. H. VOGEL PLAT—RESUB. PART OF LOT 1—PB.7, Pg.144
- (3) JOHNSON PLAT—PB.6, Pg.157
- (4) SMITHERS PLAT—D.B.31, Pg.398
- (5) QUEEN'S RIVER ESTATES, INC.— PB. 13, Pg.70



PIANKATANK DISTRICT

SECTION INSERT 10C

REVISED: 5-10-82, by Wingate Appraisal & Mapping Service, Roanoke, Virginia 1/1/87, 1/1/90, 10/92

PREPARED BY VIRGINIA STATE DEPARTMENT OF TAXATION, DIVISION OF REAL ESTATE APPRAISAL AND MAPPING