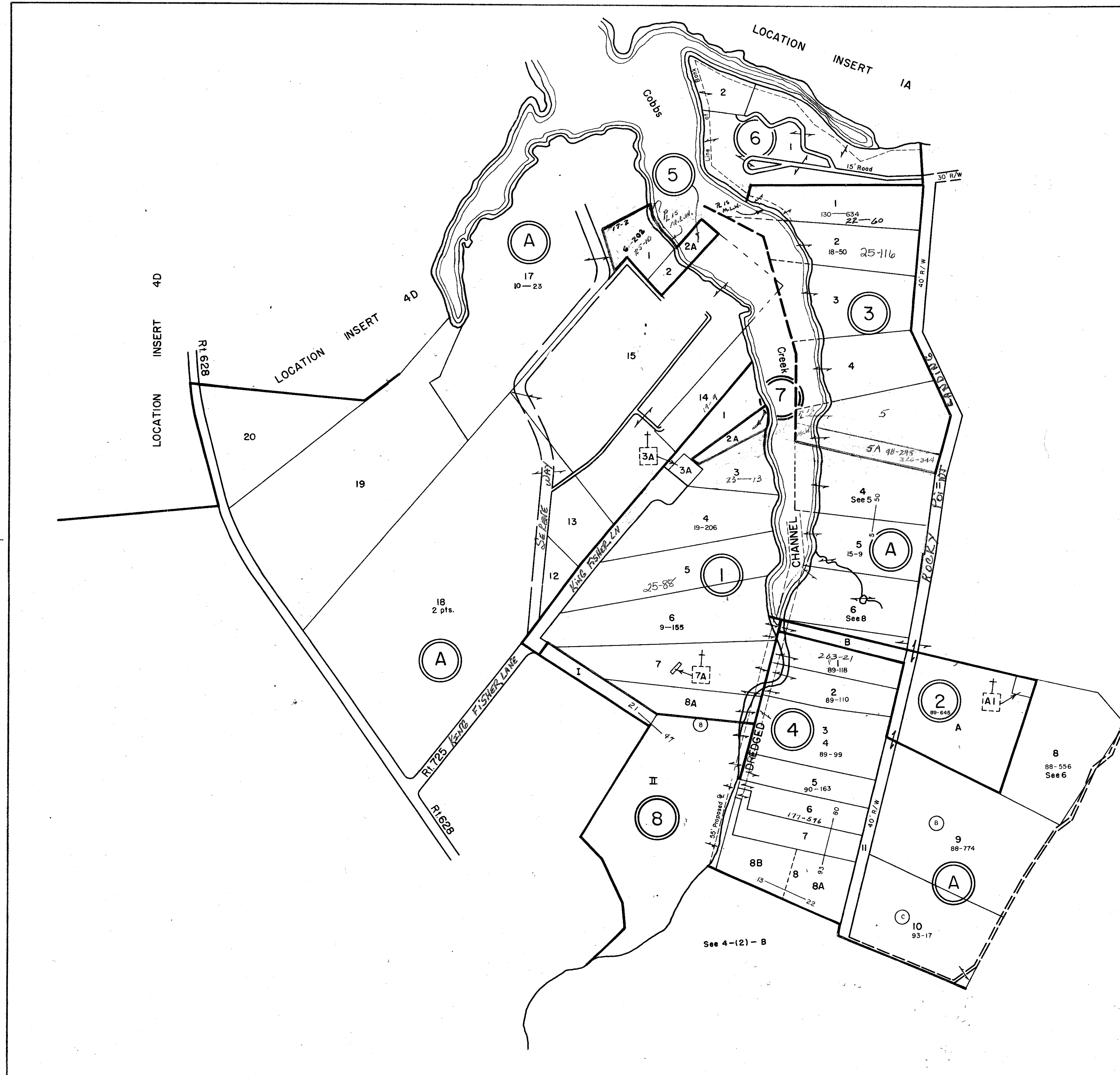
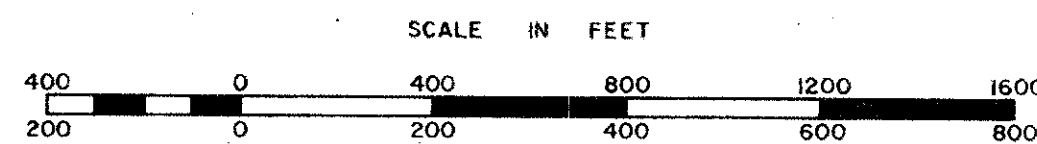


MATHEWS COUNTY



- (A) ACREAGE PARCELS
- (1) COBBS HAVEN PLAT - SECTION I - P.B. 6, Pg. 96
- (2) VOVIR INC. LAND - D.B. 89, Pg. 645
- (3) K.N. & C.C. GARDNER PLAT - P.B. 4, Pg. 261
- (4) VOVIR INC. PLATS - D.B. 93, Pgs. 80, 89, 99, 110, 118 & D.B. 90, Pg. 163
- (5) JAMES E. ASKEW PLAT - D.B. 5, Pg. 273
- (6) CHARLES HUBERT BONDURANT PLAN - D.B. 85, Pg. 611
- (7) WILLIAM R. COFER PLAT - D.B. 100, Pg. 110
- (8) VOVIR, INC. PLAT - D.B. 98, Pg. 608



REVISED: 4-2-82, by Wingate Appraisal & Mapping Service, Roanoke, Virginia 1/1/87, 1/1/90, 10/92

PIANKIATANK DISTRICT

PREPARED BY VIRGINIA STATE DEPARTMENT OF TAXATION, DIVISION OF REAL ESTATE APPRAISAL AND MAPPING

SECTION
INSERT 4B