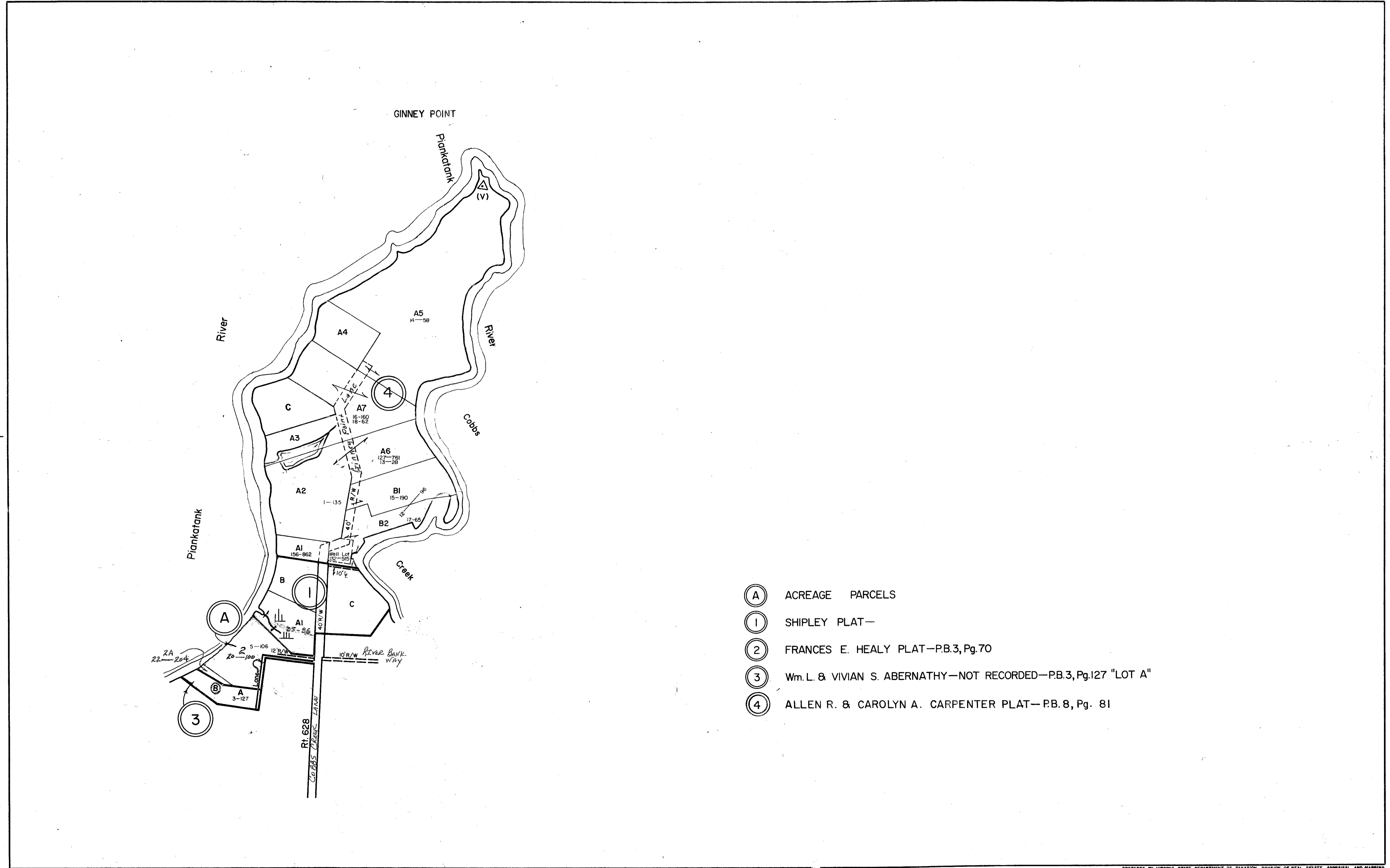
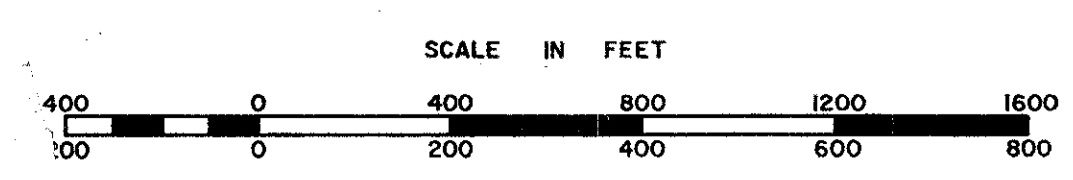


MATHEWS COUNTY



- (A) ACREAGE PARCELS
- (I) SHIPLEY PLAT—
- (2) FRANCES E. HEALY PLAT—P.B.3, Pg.70
- (3) Wm. L. & VIVIAN S. ABERNATHY—NOT RECORDED—P.B.3, Pg.127 "LOT A"
- (4) ALLEN R. & CAROLYN A. CARPENTER PLAT— P.B. 8, Pg. 81



PREPARED BY VIRGINIA STATE DEPARTMENT OF TAXATION, DIVISION OF REAL ESTATE APPRAISAL AND MAPPING