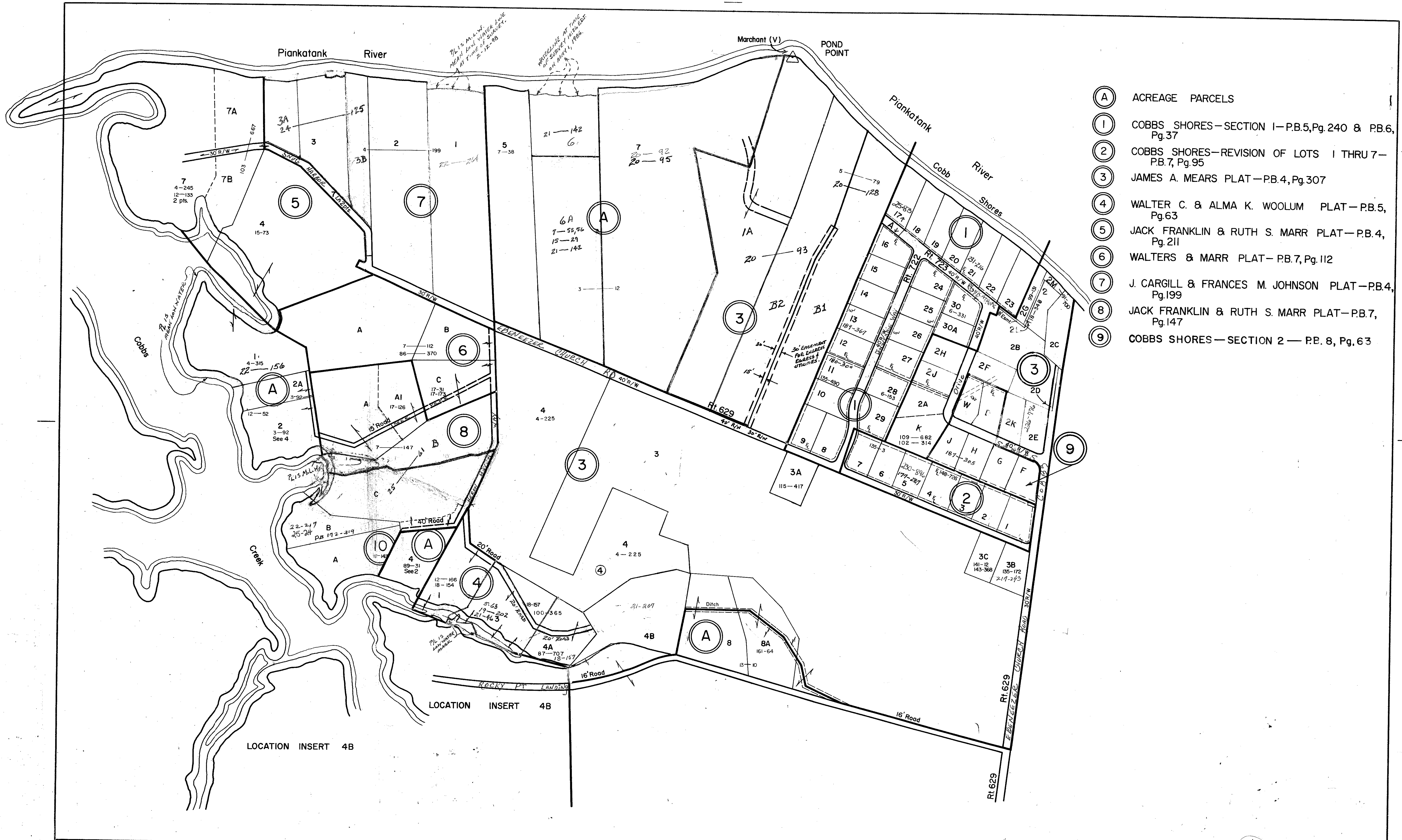
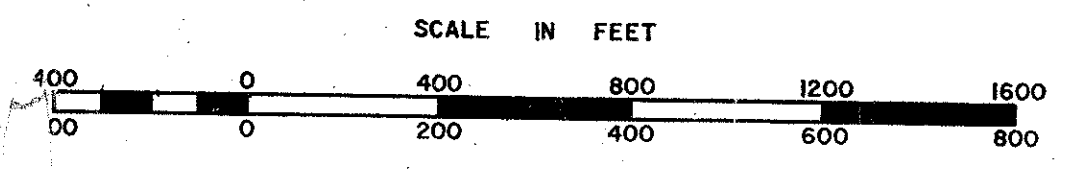


MATHEWS COUNTY



- (A) ACREAGE PARCELS
- (1) COBBS SHORES—SECTION 1—P.B.5, Pg. 240 & P.B.6, Pg. 37
- (2) COBBS SHORES—REVISION OF LOTS 1 THRU 7—P.B.7, Pg. 95
- (3) JAMES A. MEARS PLAT—P.B.4, Pg. 307
- (4) WALTER C. & ALMA K. WOOLUM PLAT—P.B.5, Pg. 63
- (5) JACK FRANKLIN & RUTH S. MARR PLAT—P.B.4, Pg. 211
- (6) WALTERS & MARR PLAT—P.B.7, Pg. 112
- (7) J. CARGILL & FRANCES M. JOHNSON PLAT—P.B.4, Pg. 199
- (8) JACK FRANKLIN & RUTH S. MARR PLAT—P.B.7, Pg. 147
- (9) COBBS SHORES—SECTION 2—P.B. 8, Pg. 63



REVISED: 3-30-82 by Wriggle
 sal & Mapping Service, Roanoke, Virginia 1/1/87, 1/1/90, 10/92

PIANKATANK DISTRICT

SECTION _____
 INSERT IA

PREPARED BY VIRGINIA STATE DEPARTMENT OF TAXATION, DIVISION OF REAL ESTATE APPRAISAL AND MAPPING