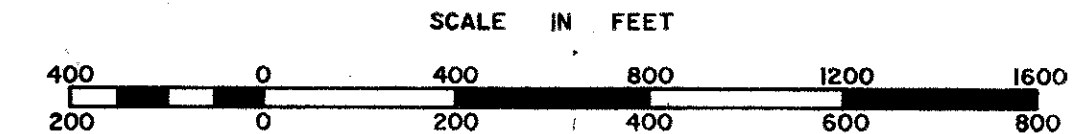
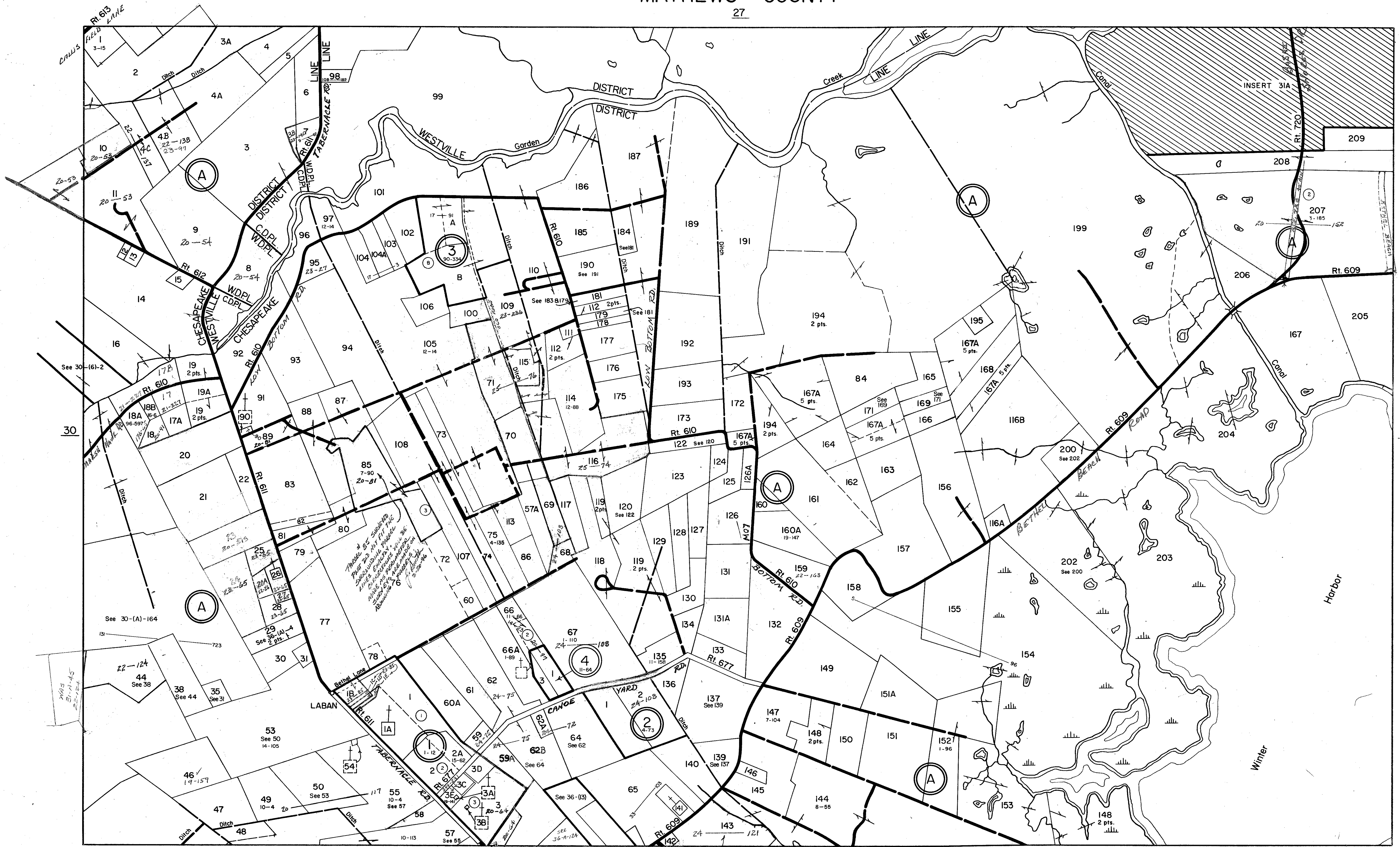


MATHEWS COUNTY

27



REVISED: 7-6-82 Wingate Appraisal & Mapping Service, Roanoke, Va. 1/1/87, 1/1/90, 10/92

PREPARED BY VIRGINIA STATE DEPARTMENT OF TAXATION, DIVISION OF REAL ESTATE APPRAISAL AND MAPPING

WESTVILLE
CHESAPEAKE DISTRICT

SECTION 31
INSERT