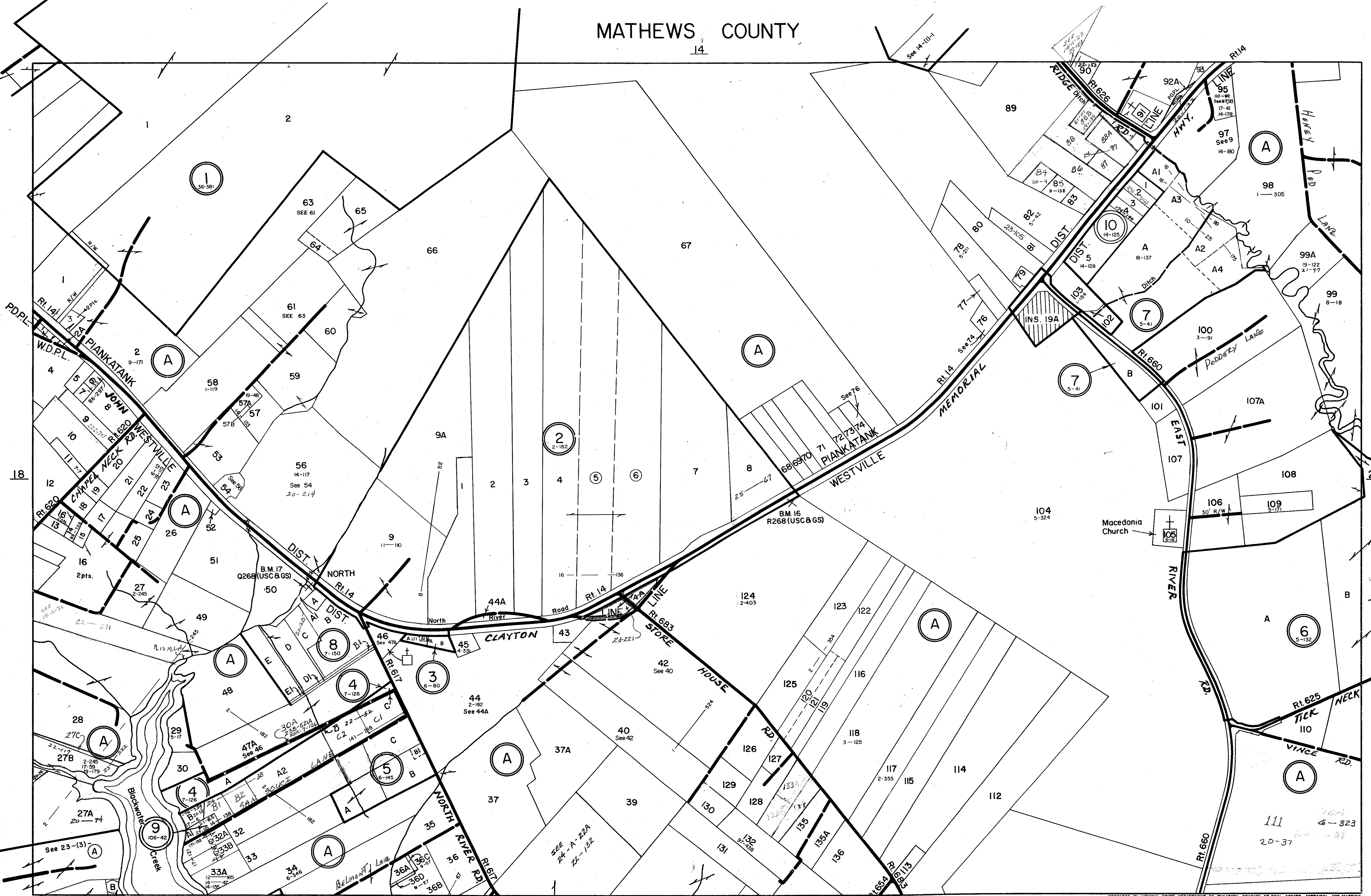


MATHEWS COUNTY

14

See 18-(3)-A

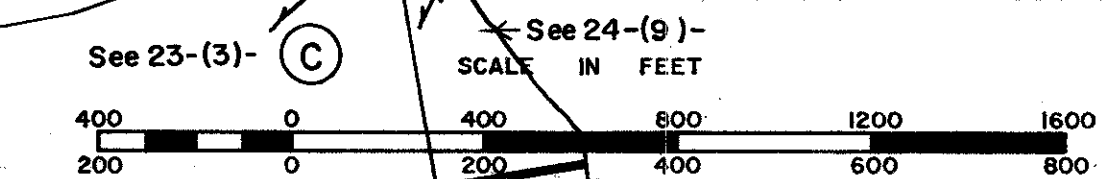
See 14-10-1



18

20

24



REVISED: 5-25-82, by Wingate Appraisal & Mapping Service, Roanoke, Virginia 1/1/87, 1/1/90, 10/92

PREPARED BY VIRGINIA STATE DEPARTMENT OF TAXATION, DIVISION OF REAL ESTATE APPRAISAL AND MAPPING

PIANKATANK WESTVILLE DISTRICT

SECTION 19
INSERT