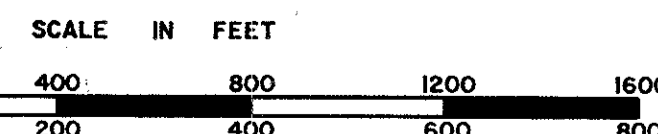
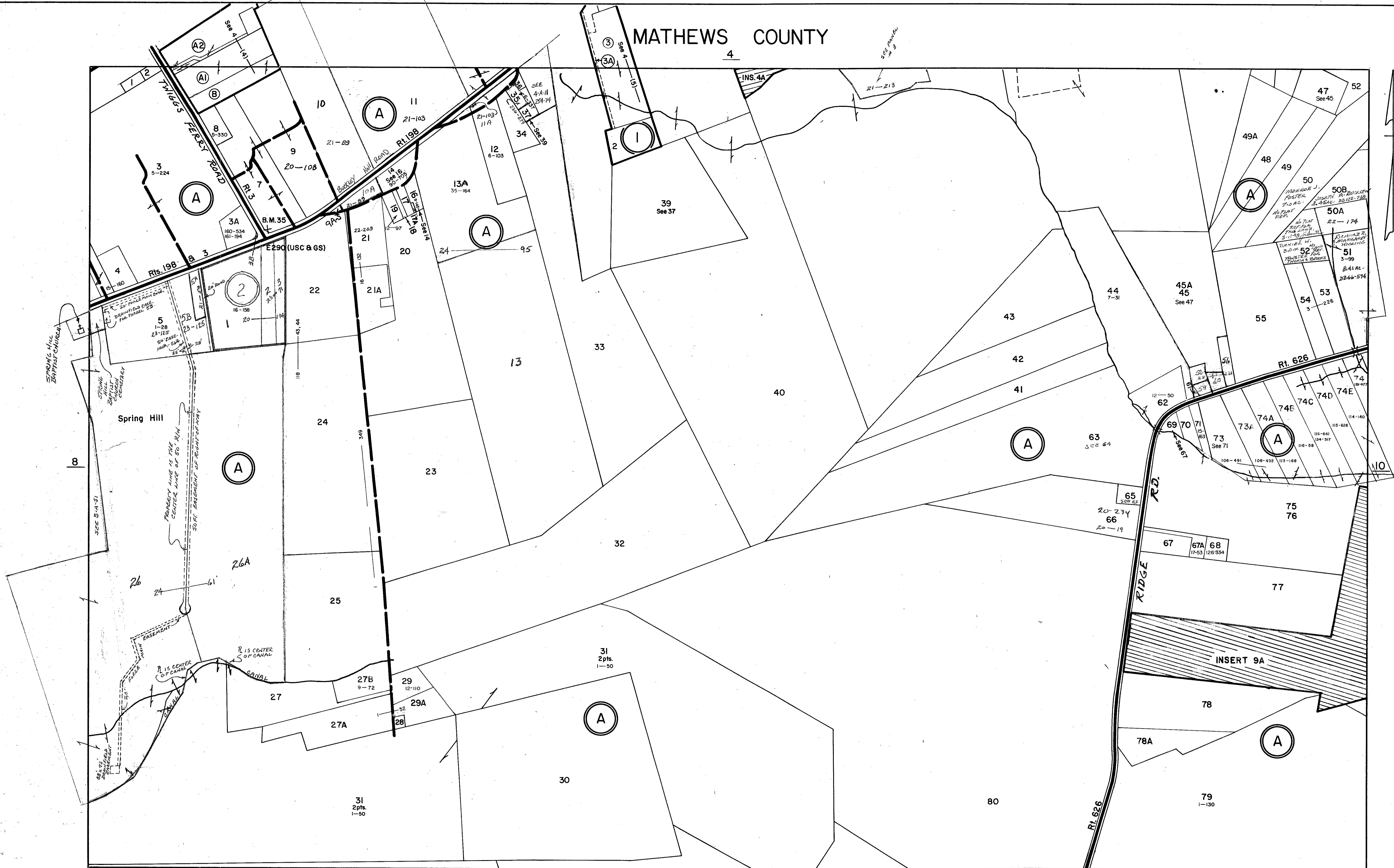


MATHEWS COUNTY



REVISED: 4-7-82, by Wingate Appraisal & Mapping Service, Roanoke, Virginia 1/1/87, 1/1/90, 10/92

PIANKATANK DISTRICT

SECTION 9
INSERT

PREPARED BY VIRGINIA STATE DEPARTMENT OF TAXATION, DIVISION OF REAL ESTATE APPRAISAL AND MAPPING